

Foundation of Hope



The Church...
The Body of Christ!

Sunday - February 16th, 2025

Order of Worship

Prelude

Welcome

Song *"Before the Throne of God Above"*

Responsive Reading - Psalm 1

Song *"Trust in God"*

Prayer of the Day

Readings Jeremiah 17:5-8
Luke 6:17-26

Anchored in Christ

Song *"Firm Foundation"*

Sermon Text 1 Corinthians 15:12-20

Message

Prayers of God's People

The Lord's Prayer

Words of Institution

The Nicene Creed

Distribution Songs *"O Praise the Name"*
"Jesus Paid it All"

Prayer of Blessing

Announcements

Benediction

Song *"Build My Life"*

Postlude

This Week at Christ Lutheran:

Sunday 9am - Worship Service
10am - Coffee Fellowship
10:15am - Family SS
4pm - ROOTS: Unleashed!

Monday 9am - Quilting
10am - Coffee

Wednesday 6:15pm - Bible Study

Thursday 9am - Charis Women's
Bible Study
7pm - Council Meeting

Friday Office Closed
6:30am- Men's Prayer
Breakfast

Sunday 9am - Worship Service
10am - Coffee Fellowship
10:15am - Family SS

Sunday Servants -

Greeters & Coffee: Tom & Cindy Zulkosky
Reader: Denny Johnson
Communion Prep: Yoshi & Denny Grenell

Please pray for the following people:

Dolores Peterson's family, Don Anderson,
JoEllen Horazuk, Ron Wipf, Yvonne
Breeschoten, Val Molin,
Sue Pedersen, Cal Johnson's family

Jeremiah 17:5-8

⁵ This is what the Lord says:

“Cursed is the one who trusts in man,
who draws strength from mere flesh
and whose heart turns away from
the Lord.

⁶ That person will be like a bush in the
wastelands;
they will not see prosperity when it
comes.

They will dwell in the parched places of the
desert,
in a salt land where no one lives.

⁷ “But blessed is the one who trusts in the
Lord,
whose confidence is in him.

⁸ They will be like a tree planted by the water
that sends out its roots by the stream.
It does not fear when heat comes;
its leaves are always green.
It has no worries in a year of drought
and never fails to bear fruit.”

Luke 6:17-26

¹⁷ He went down with them and stood on a
level place. A large crowd of his disciples was
there and a great number of people from all
over Judea, from Jerusalem, and from the
coastal region around Tyre and Sidon, ¹⁸ who
had come to hear him and to be healed of
their diseases. Those troubled by impure
spirits were cured, ¹⁹ and the people all tried
to touch him, because power was coming
from him and healing them all.

²⁰ Looking at his disciples, he said:

“Blessed are you who are poor,
for yours is the kingdom of God.

²¹ Blessed are you who hunger now,
for you will be satisfied.

Blessed are you who weep now,
for you will laugh.

²² Blessed are you when people hate you,
when they exclude you and insult you
and reject your name as evil,
because of the Son of Man.

²³ “Rejoice in that day and leap for joy, because
great is your reward in heaven. For that is how
their ancestors treated the prophets.

²⁴ “But woe to you who are rich,
for you have already received your comfort.

²⁵ Woe to you who are well fed now,
for you will go hungry.

Woe to you who laugh now,
for you will mourn and weep.

²⁶ Woe to you when everyone speaks well of
you, for that is how their ancestors treated
the false prophets.

Lent Soup Suppers are Back!!

**Lenten Supper forms are in your
bulletin and on the narthex welcome
desk. Please, check to see where you can
help. Renee will collect these from the
basket provided and assign your time/
resources where it fits best. You will be
notified of your date by February 24th;
Questions? Call Renee: 763-913-7808.**

Ministry Partner Spotlight: Inspiration Point!

IPOINT FAQ's:

Will my child be safe at camp? Camper safety is the first priority at Inspiration Point and is something they take seriously! Over 30% of summer staff are certified lifeguards and trained in first aid and CPR. They also employ a camp nurse to manage medications and care for camper and staff health. All of our staff complete over 120 hours of training before each summer begins.

How do they hire summer staff? Inspiration Point knows that staff is the backbone of the ministry. Applicants complete a staff application, submit three character references, are interviewed and complete a background check prior to employment. They look for individuals with exceptional character, a strong faith in Jesus Christ, and a passion for serving others. All summer staffers complete 120 hours of training before working with campers.

What is camper/staff ratio? In cabin groups, the camper to counselor ratio is 1:8 (Trailblazers 1:4); when you include support staff, the total camper to staff ratio is 1:4.



Check out their winter retreats for kids AND adults as well as summer camps for all ages at www.ipoint.org

Staff Contact Info

Pastor: Wes Asheim pastorwes517@gmail.com

Worship & Music Director: Jack Long worshipdirectorclc@gmail.com

Children's Ministry Directors: Jon & Kiana Barkalow

christlutherankids@gmail.com

Office Admin: Tami Greenwood tgreenwood@mpclc.org



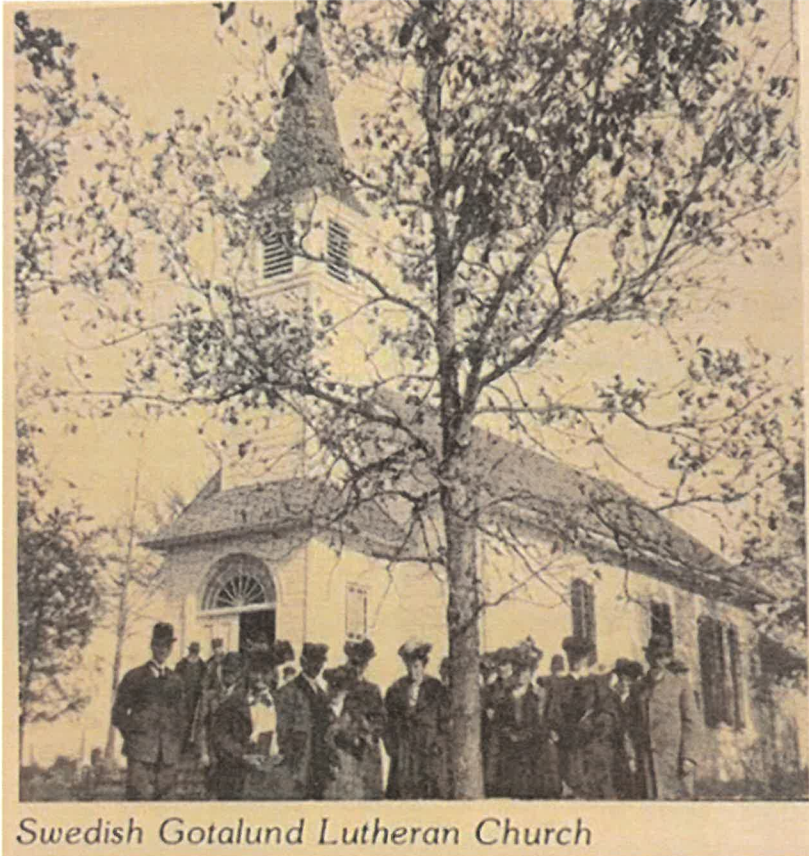
CHRIST LUTHERAN CHURCH

*Love God, Love others, Serve the World,
teaching that
Jesus Changes Everything*

(763) 479-2373 ~ Hours: M-TH, 9am-3pm
www.mpclc.org



150 Years of Memories



The Swedish Gotalund Lutheran Church of Maple Plain was organized in 1875 in the home of Jonas Moline where services were held until the church was built 1879. The building was erected on an acre of land donated by Jonas Moline. Building measurements were 26 feet long by 22 feet wide and cost \$194.92.

Weekly Bible Reading Guide (NT in 1 Year)

Week 7 (February 17 – 21): Acts 7- Acts 11

Monday - Acts 7

- What is Stephen's point in reciting the history of Israel?
- How does Stephen describe the prophets in verse 52?
- How does Luke describe Stephen in verses 54–60?

Tuesday - Acts 8

- What was the result of Saul's persecution? (vv. 1–4)
- Was Simon a true believer? (vv. 9–24)
- Why was it important for the Ethiopian eunuch, in particular, to hear the gospel? (vv. 26–40)

Wednesday – Acts 9

- In what sense was Saul persecuting Jesus? (vv. 4–5)
- What was God's will for Saul's life? (v. 16)
- How is Peter presented in verses 32–43?

Thursday – Acts 10

- Was Cornelius a Jew or a Gentile? (v. 1)
- What was the meaning of Peter's vision? (v. 28)
- Why did Cornelius need Peter to preach the gospel to him, since he was already a God-fearing man?
- What is the significance of Cornelius' conversion? (v. 45)

Friday - Acts 11

- Why was it controversial that Peter associated with Gentiles? (vv. 2–3)
- Why was it so surprising that Gentiles also received the Holy Spirit? (vv. 16–18)
- What is Luke's focus in chapters 10–11?